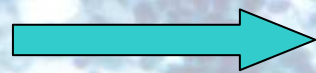
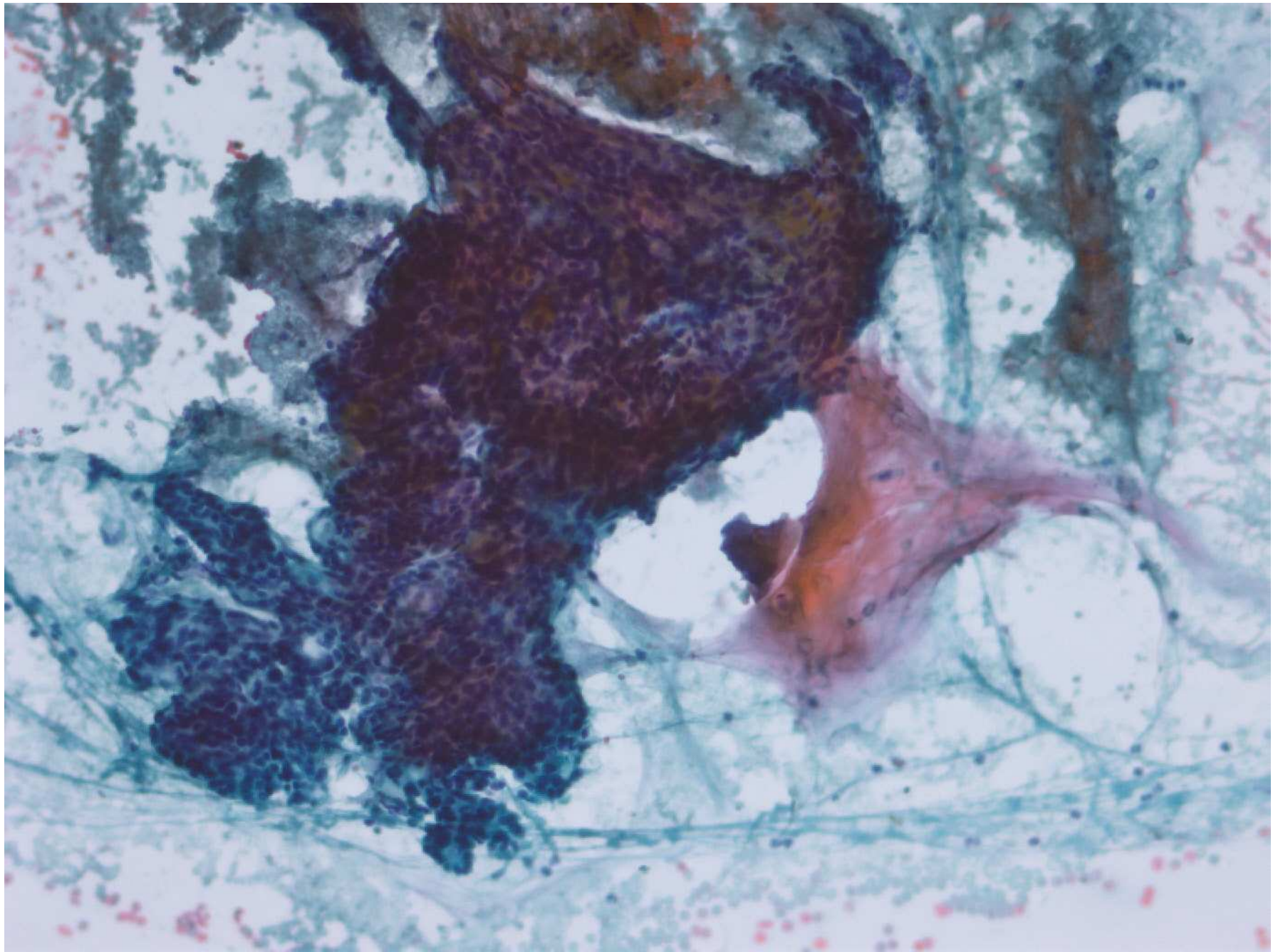


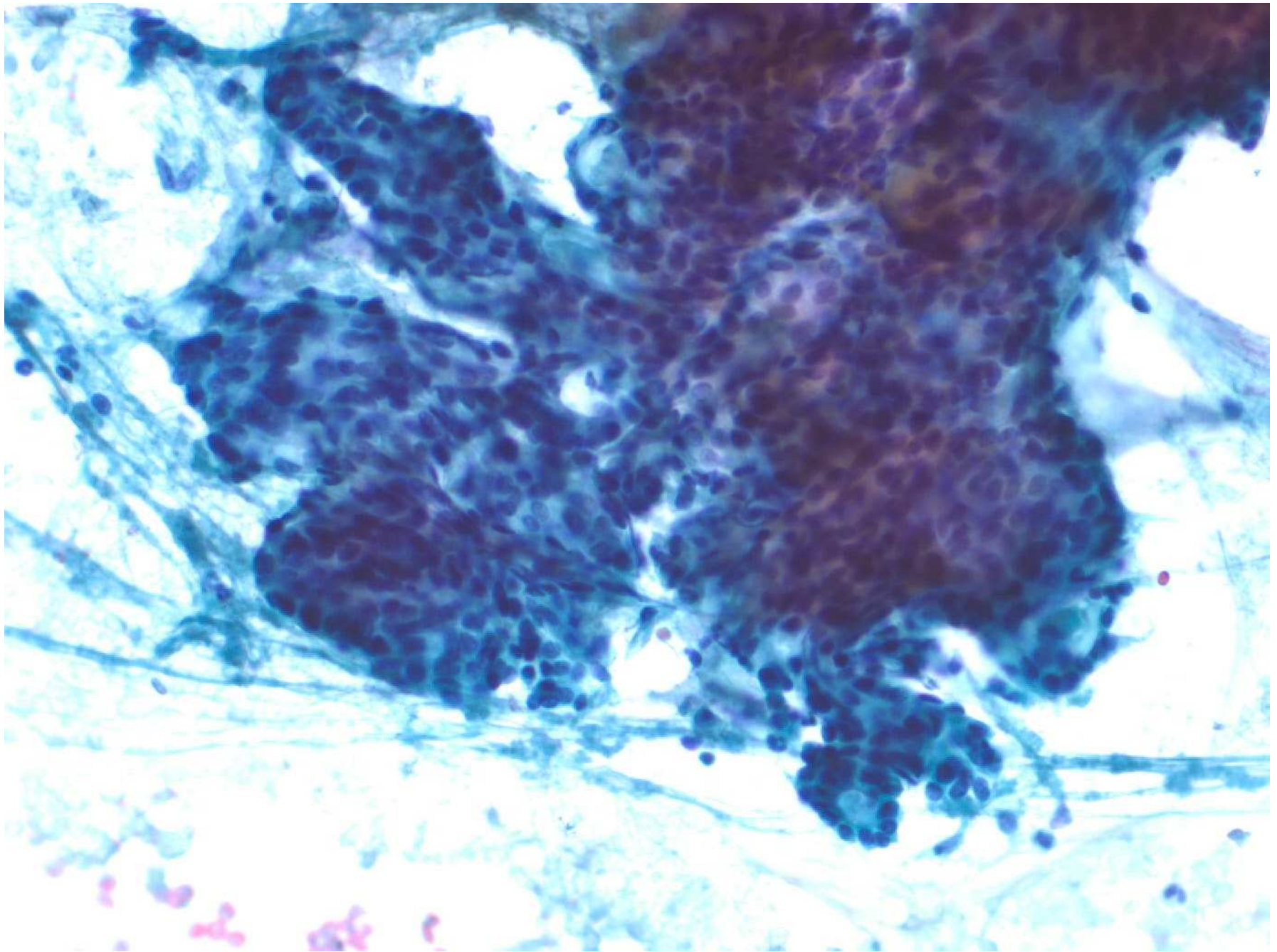
## 55-jähriger Mann

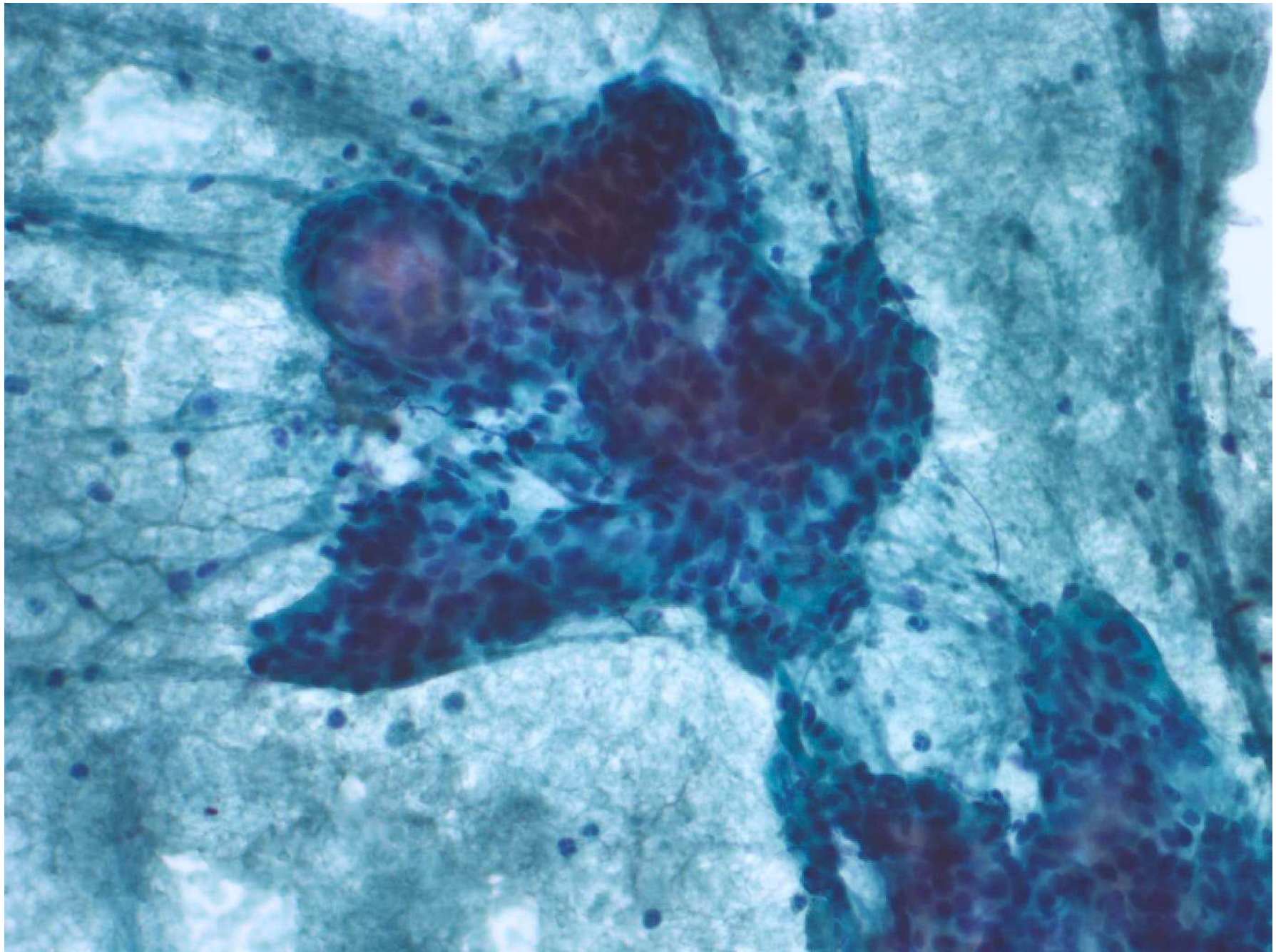
teils zystische, teils solide, indolente  
Raumforderung submandibulär, anterior  
der Glandula parotis

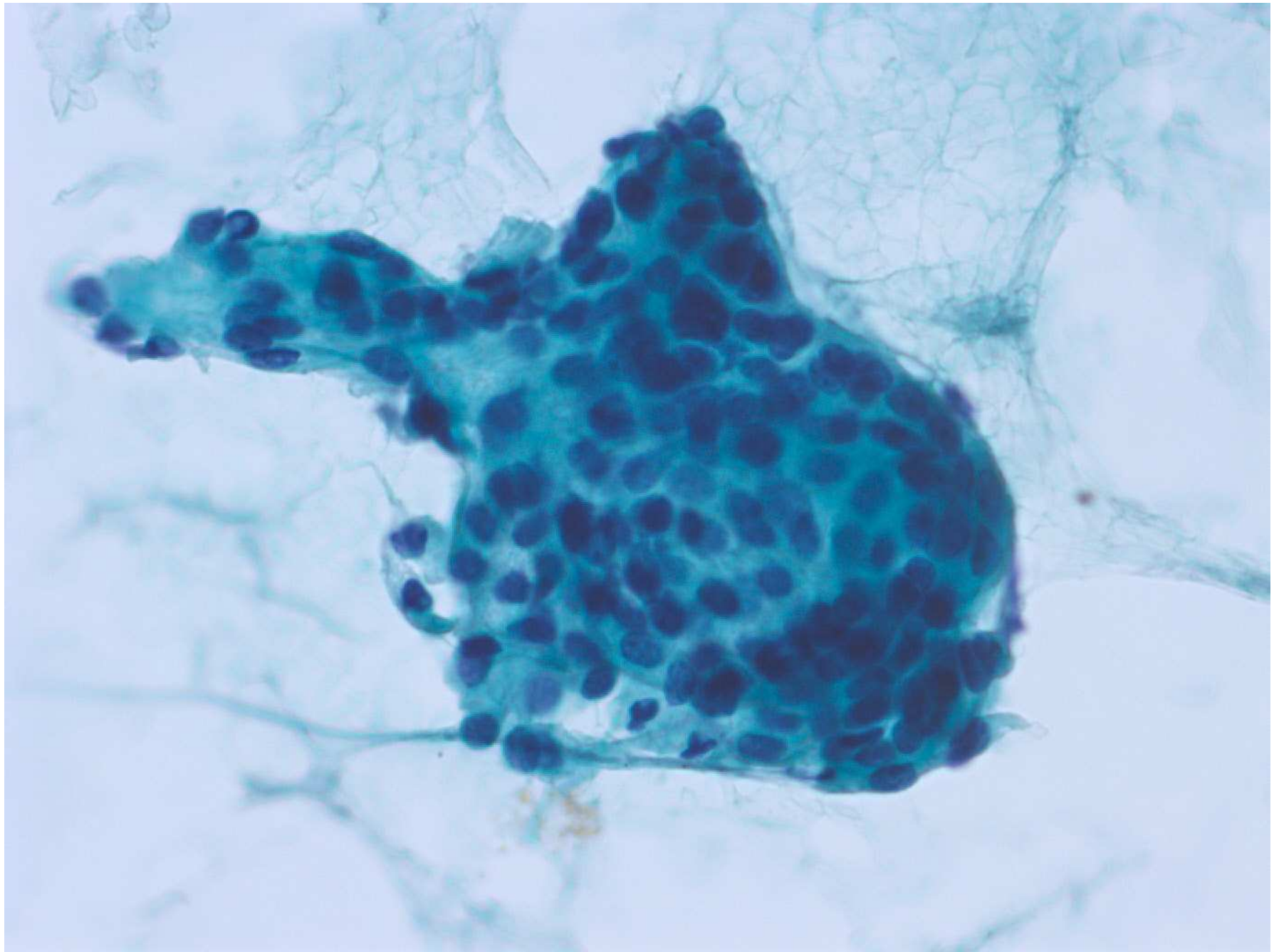


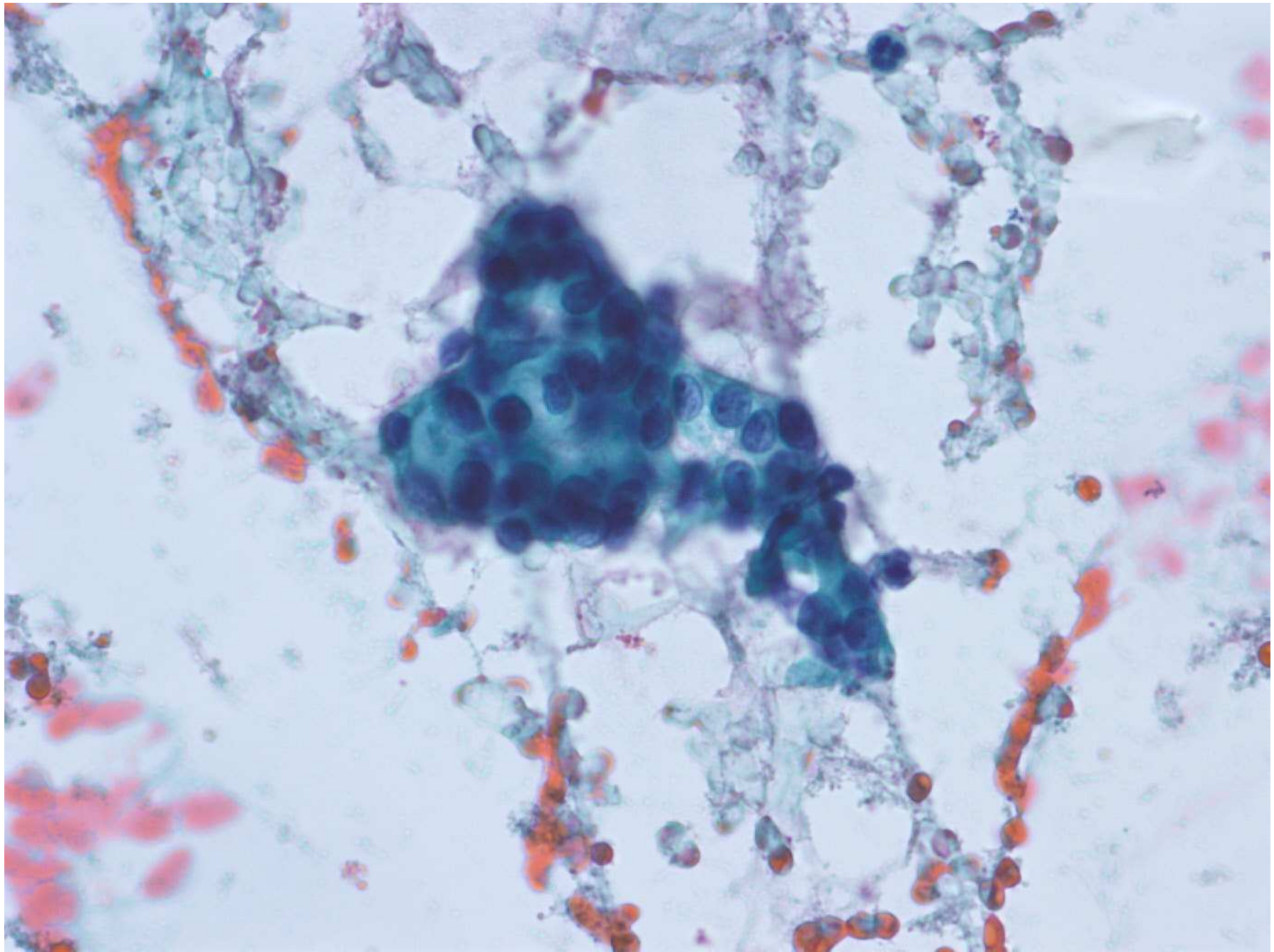
FNP

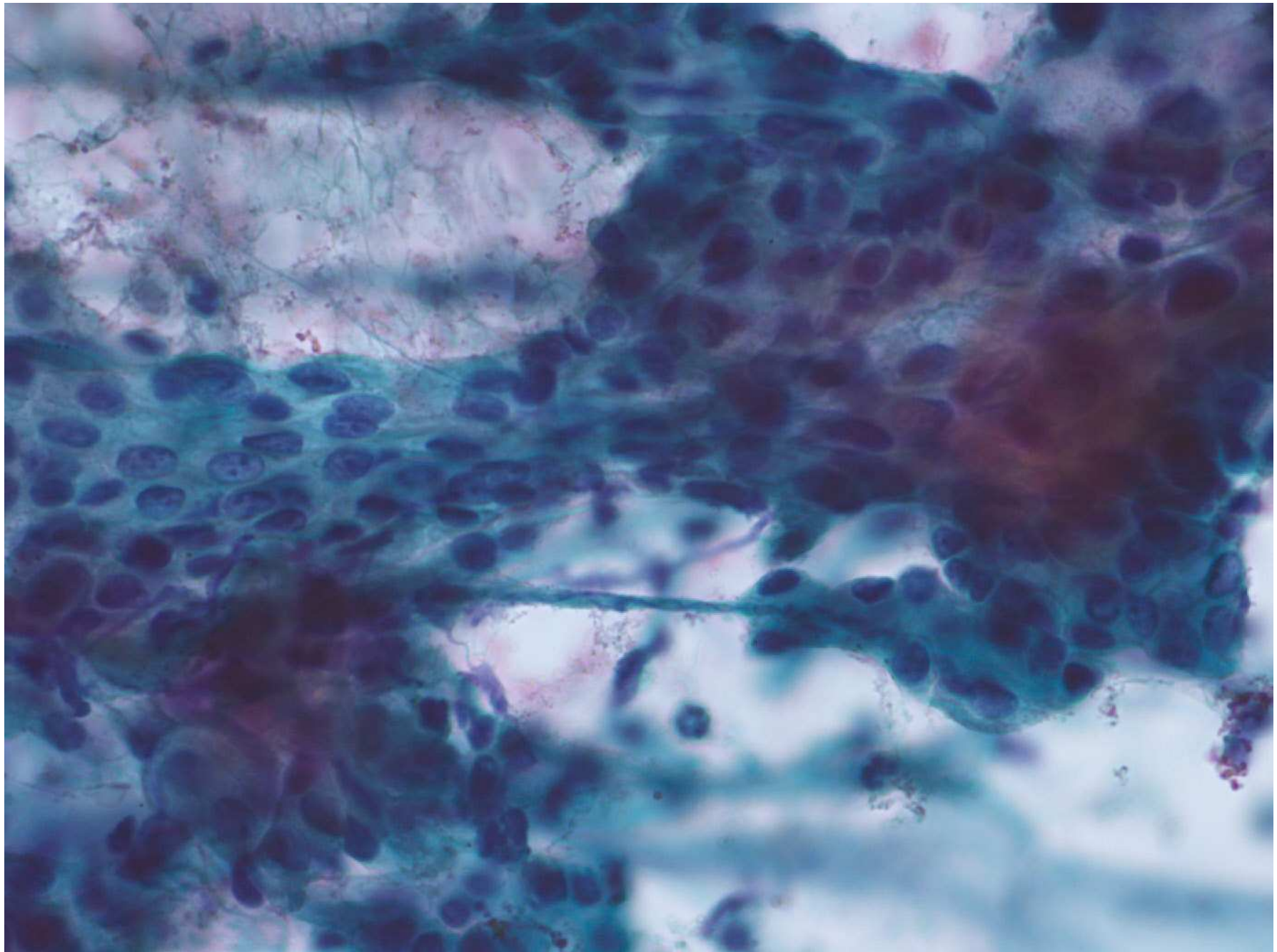


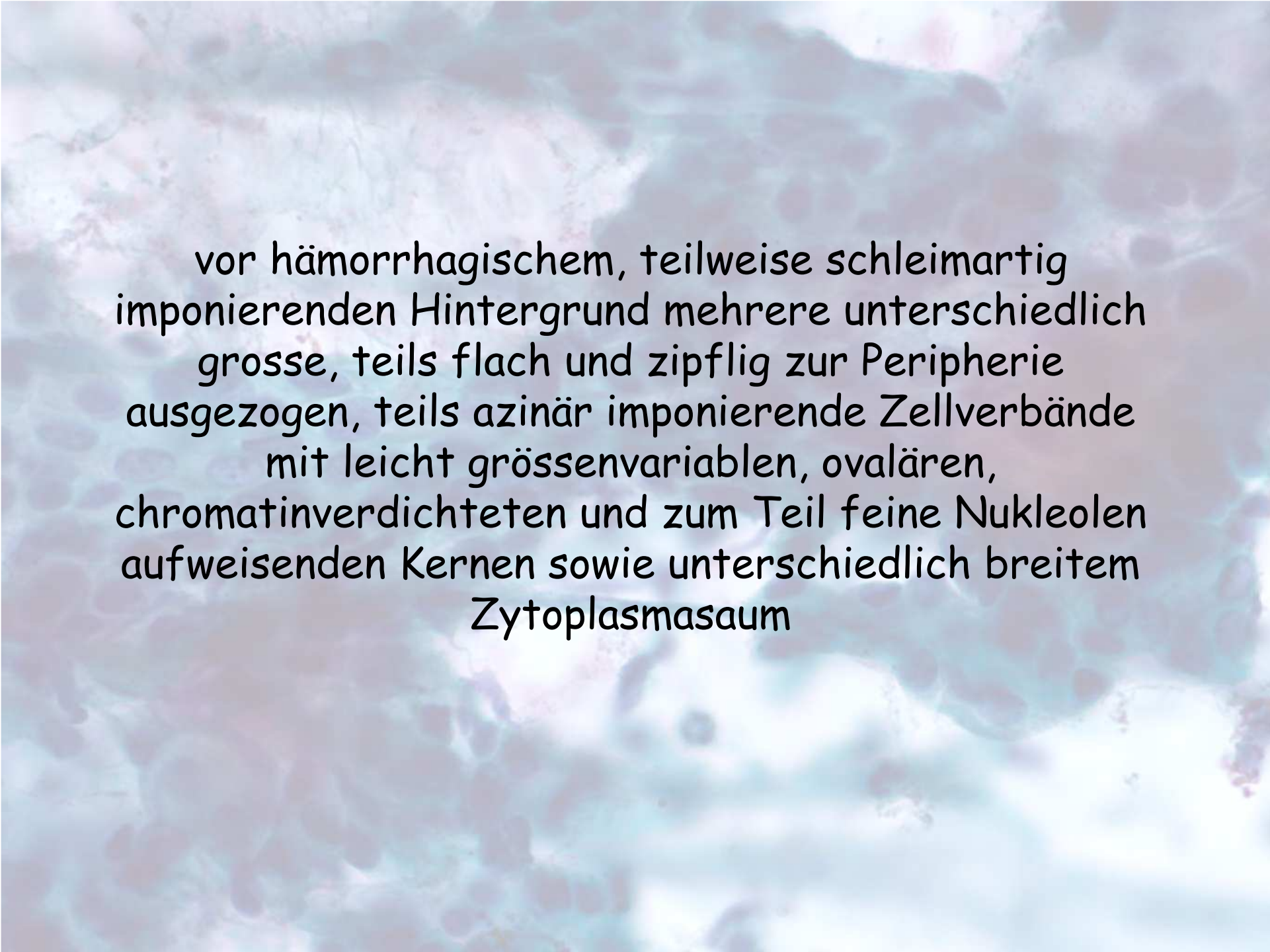











The image is a light micrograph of a tissue section, likely stained with hematoxylin and eosin (H&E). The background is a pale, pinkish-purple, indicating a hemorrhagic or mucinous environment. Scattered throughout are various cellular structures. Some cells are arranged in small, flat, acinar-like clusters, while others are more isolated. The nuclei of these cells are stained dark purple, showing varying degrees of condensation and size. Some nuclei are notably large and contain prominent, dark nucleoli. The cytoplasm of the cells is stained a light pink, and the overall architecture suggests a neoplastic process, possibly a carcinoma, given the cellular atypia and the hemorrhagic background.

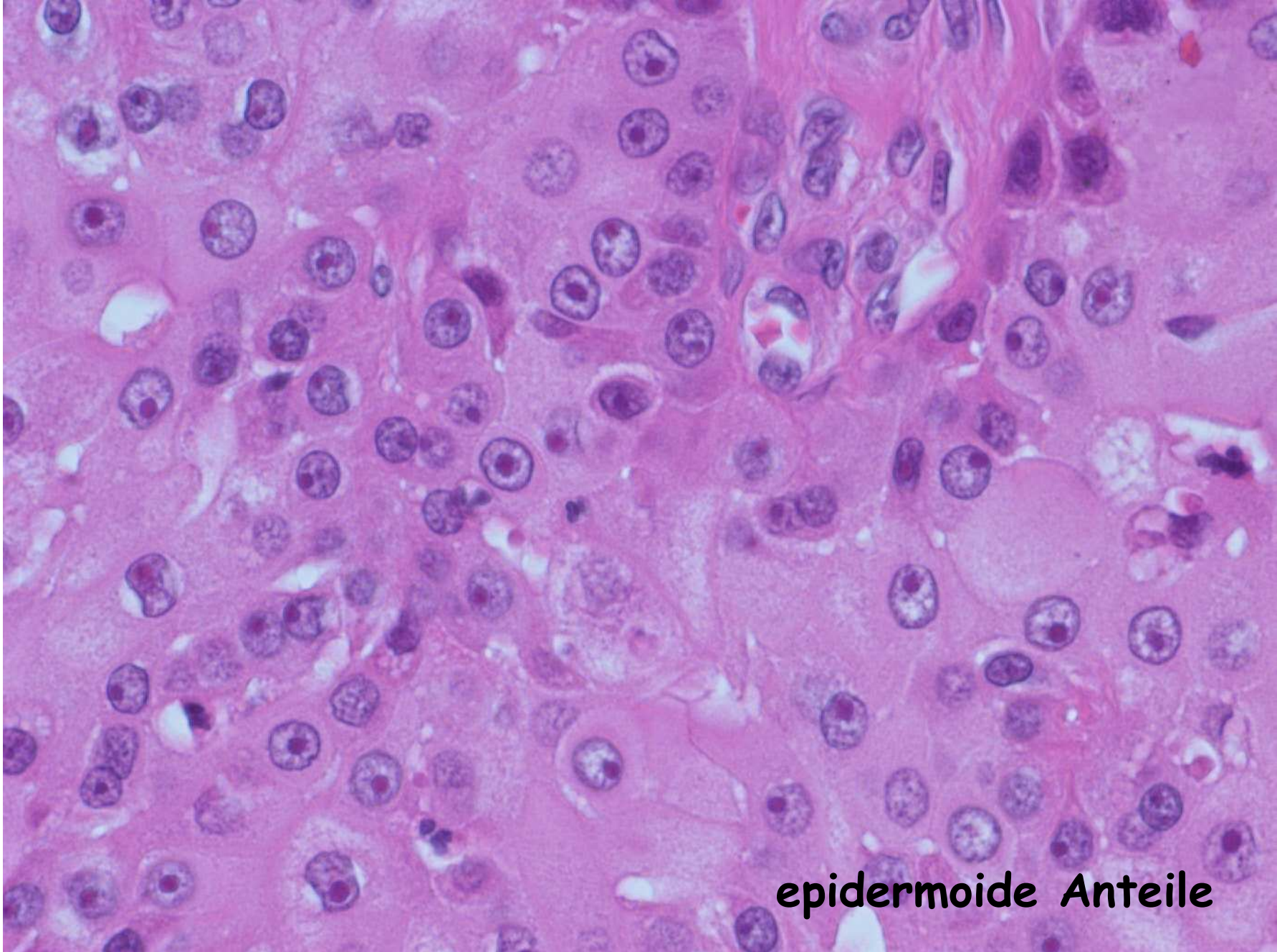
vor hämorrhagischem, teilweise schleimartig  
imponierenden Hintergrund mehrere unterschiedlich  
grosse, teils flach und zipflig zur Peripherie  
ausgezogen, teils azinär imponierende Zellverbände  
mit leicht grössenvariablen, ovalären,  
chromatinverdichteten und zum Teil feine Nukleolen  
aufweisenden Kernen sowie unterschiedlich breitem  
Zytoplasmasaum

# Differentialdiagnose

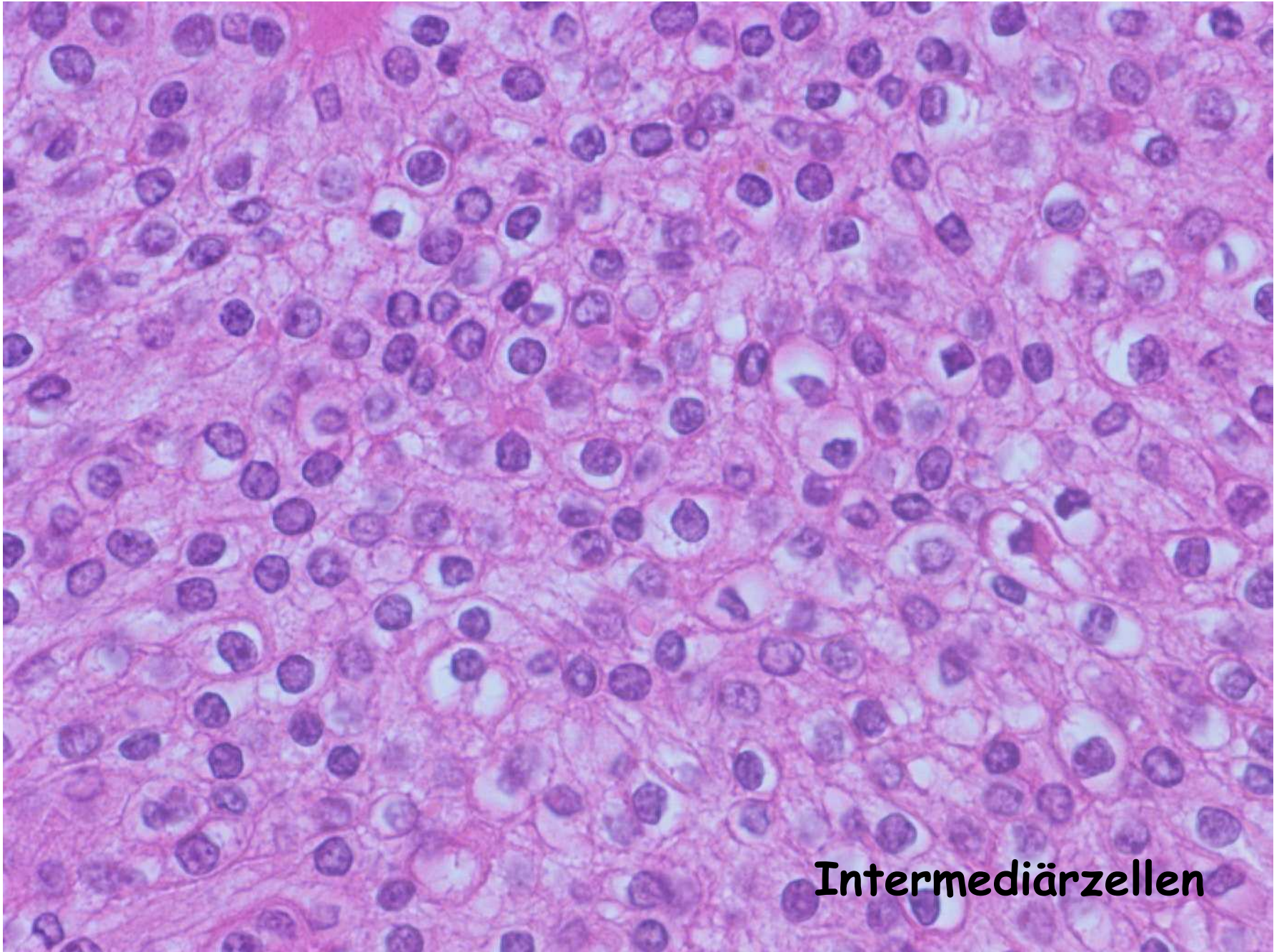
- muzinöses Zystadenom
- monomorphes Adenom
- Low grade pleomorphes Adenokarzinom
- mukoepidermoides Karzinom
- Metastase eines Adenokarzinomes

The background of the slide is a microscopic image of a tissue section, likely from a salivary gland. It shows numerous glandular units with varying degrees of cystic degeneration. The glandular acini are arranged in a somewhat disorganized pattern, and there are several large, pale, cystic spaces interspersed among the glandular tissue. The overall appearance is consistent with a benign glandular neoplasm, such as a pleomorphic adenoma.

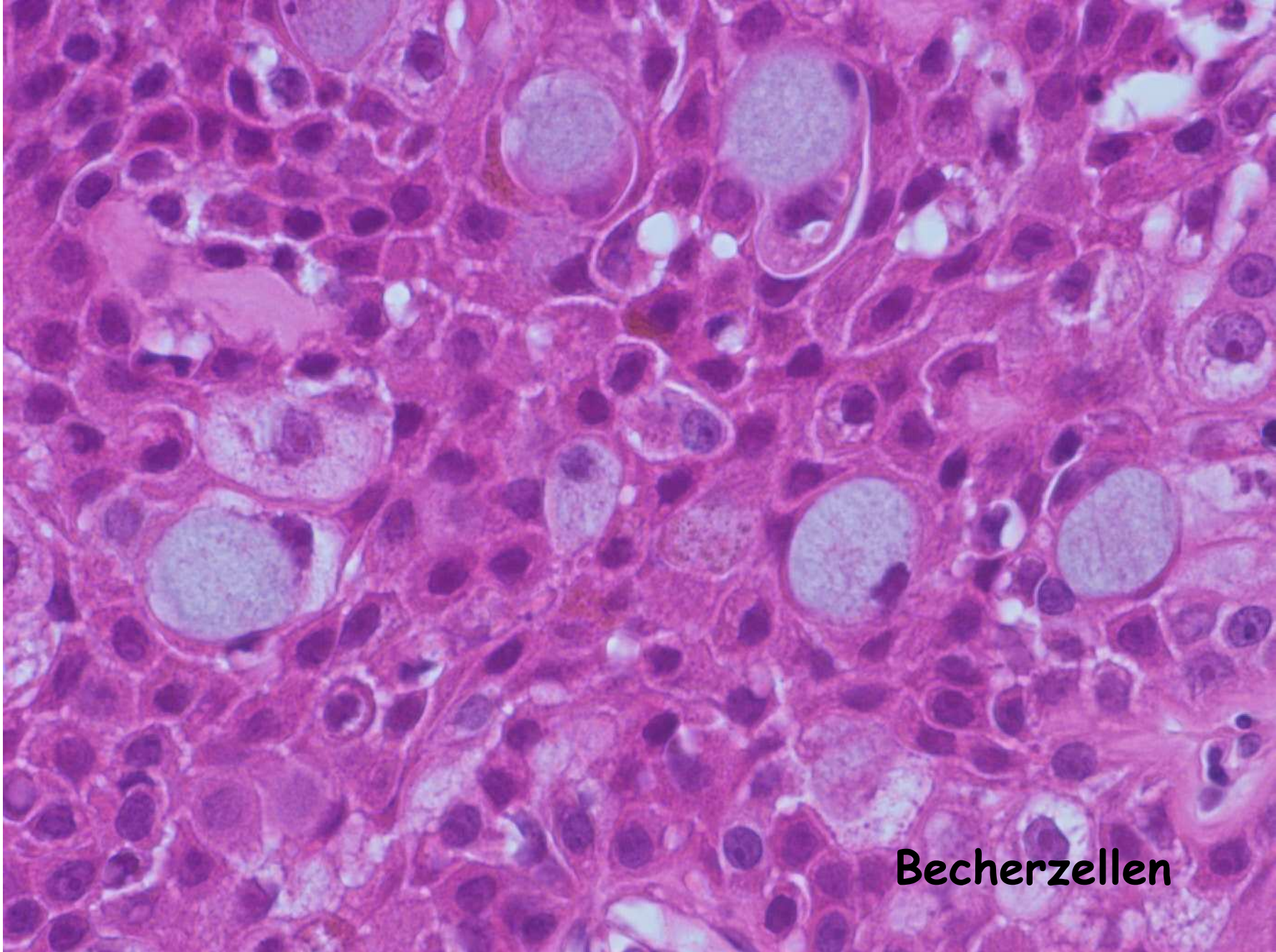
Operative Entfernung der Glandula  
submandibularis mit einem 3.5cm  
messenden, polyzyklisch begrenzten derben  
Tumor, zur Hälfte zystisch.



**epidermoide Anteile**

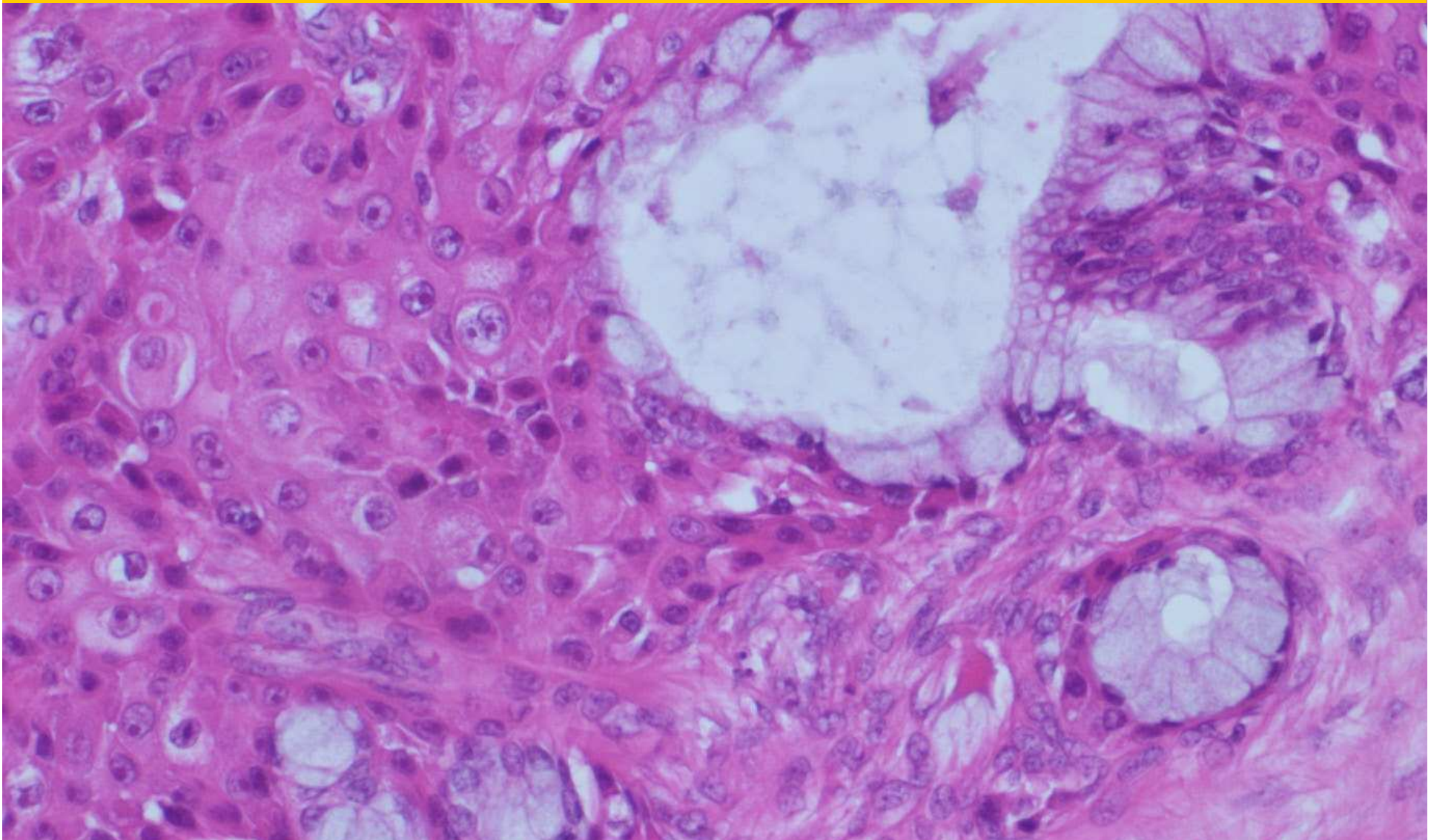


**Intermediärzellen**



**Becherzellen**

# Low grade mukoeypidermoides Karzinom



- 5-10% der Speicheldrüsentumoren
- durchschnittlich jüngere Patienten (20-60j.)
- Frauen und Männer in etwa gleich häufig betroffen
- meist Befall der Gl.parotis, seltener Gl.submandibularis
- klinisch langsam wachsender, harter, schmerzloser Knoten mit soliden und zystischen Anteilen
- Zytologisch schwierig zu diagnostizieren. Pathognomonisch ist ein Nebeneinander von epidermoiden und mukoiden Zellen (Intermediärzellen schwer fassbar). Hintergrund va. bei gut differenzierten Tumoren mukoid. Wenig differenzierte Tumoren werden oft als Plattenepithelkarzinom verkannt.